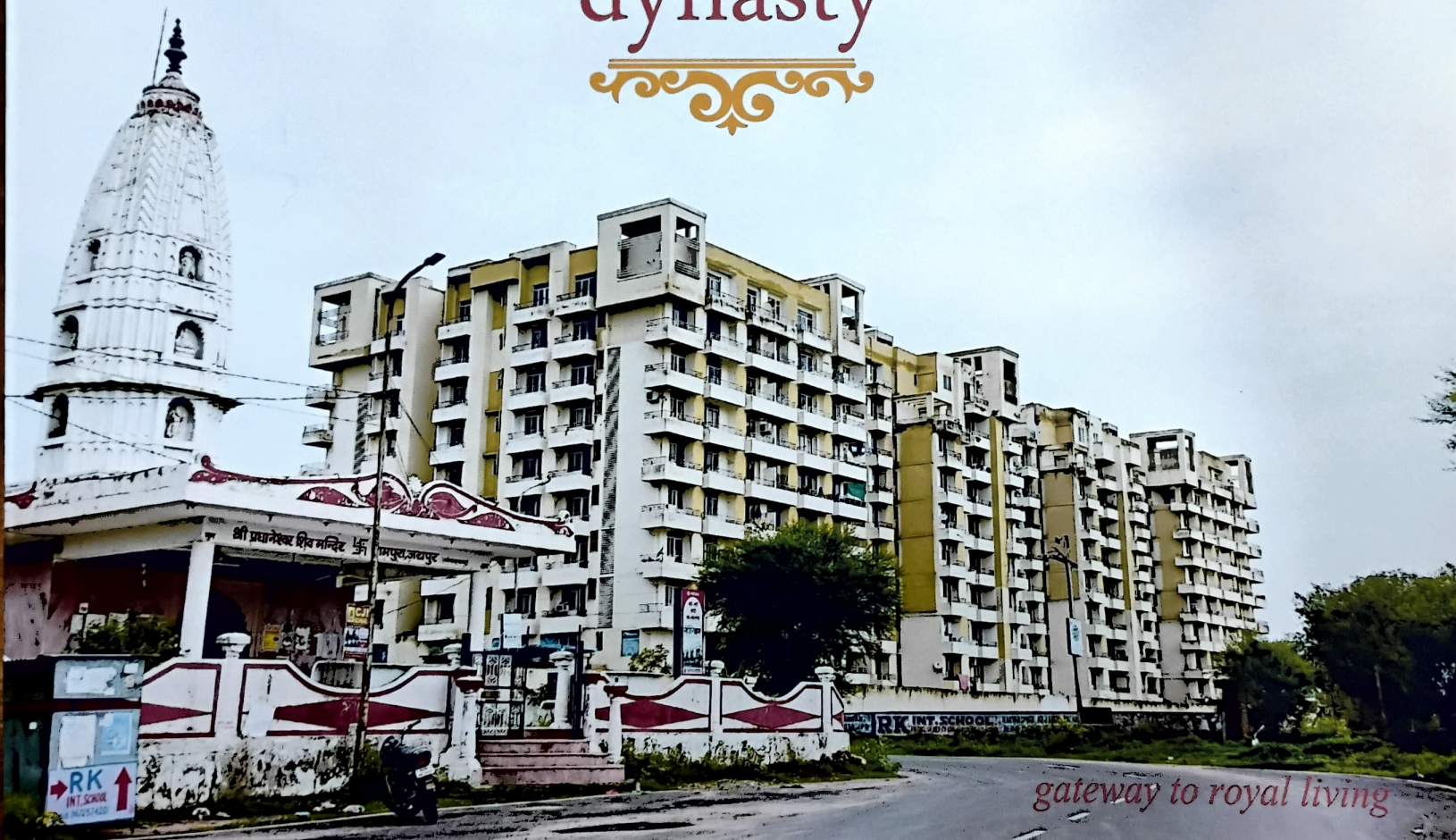
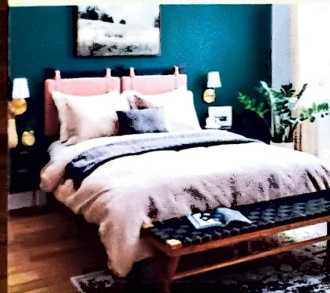


# dynasty

 **ARIHANT**  
GROUP  
*Shaping the future*



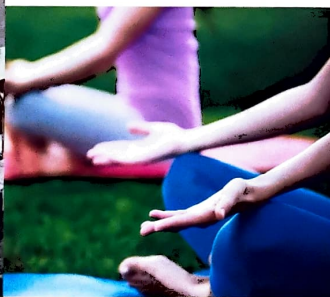
*gateway to royal living*



1 / 2 / 3 / 4 BHK Flats



Hi-tech Gymnasium



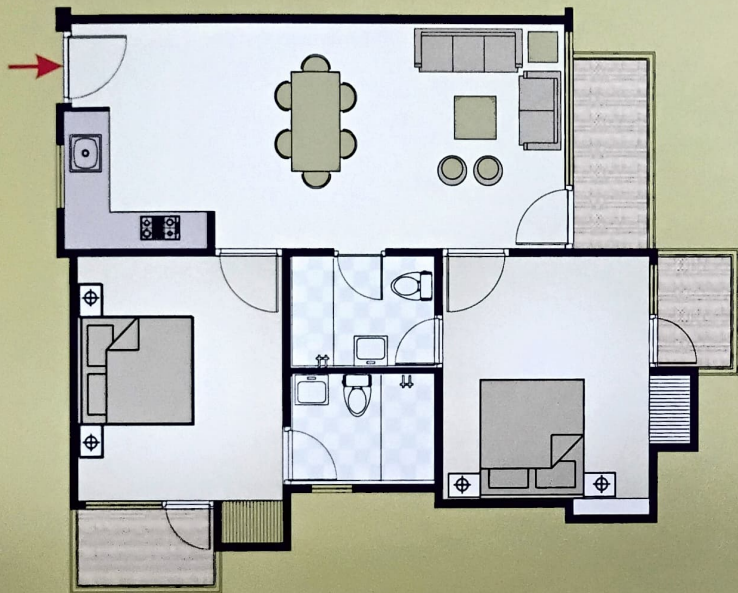
Prized location  
Modern finishes  
Ample parking  
Total security



*you live only once, so live it exclusively*

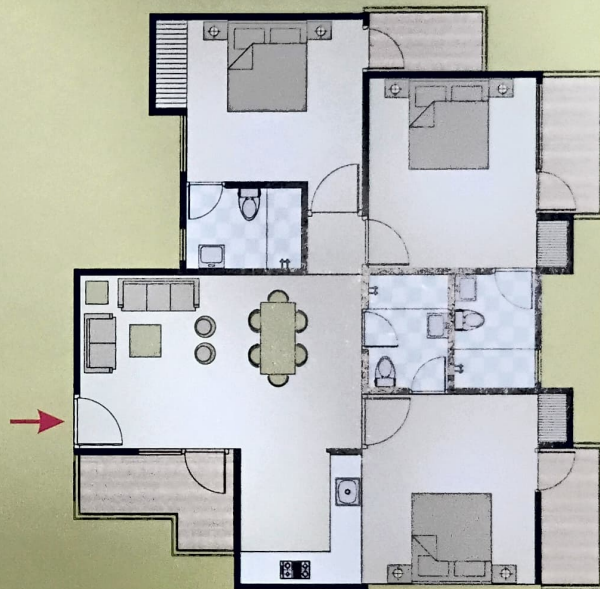


# Floor Plan



## 2 BHK

Super Built Up Area = 930.00 Sq.ft  
Built up Area = 744 Sq.ft

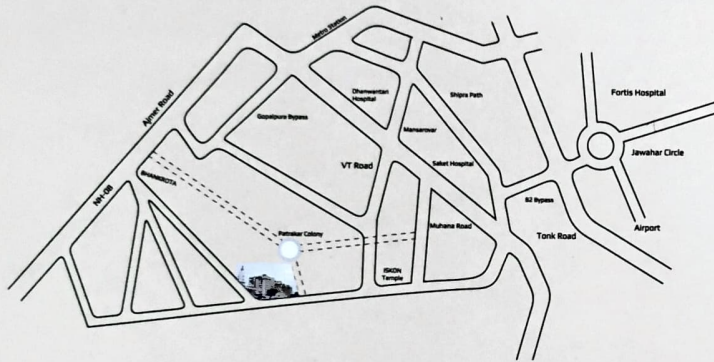


## 3 BHK

Super Built Up Area = 1300.00 Sq.ft  
Built up Area = 1006 Sq.ft

RERA Reg. No. RAJ/P/2017/293

### Location Map



Ramsinghpura, Near Patrakar Colony, Mansarovar, Jaipur

D I S T A N C E S	Airport	11.6 km - 15 min
	Railway station	9.6 km - 17 min
	Central Bus stand	11 km - 20 min
	Metro station	2.9 km - 7 min
	Ajmer Expressway	2.8 km - 6 min
	ISKCON temple	3.3 km - 6 min

**dynasty**



**TOLL FREE No.**  
**9057877877**

**Arihant Dream Infra Projects Ltd.**

2nd Floor, Class of Pearl, Income Tax Colony, Tonk Road, Jaipur-302018  
info@arihantshivank.com www.arihantshivank.com

All specification mentioned are tentative and subject to change. The developers/builders and/or the architect reserve the right to change any information without prior notice. This brochure is for illustrative purpose and shall not be treated as a legal document.

architectural design  
**architect plus**

92, PANCHSHEEL ENCLAVE, JLN MARG, JAIPUR